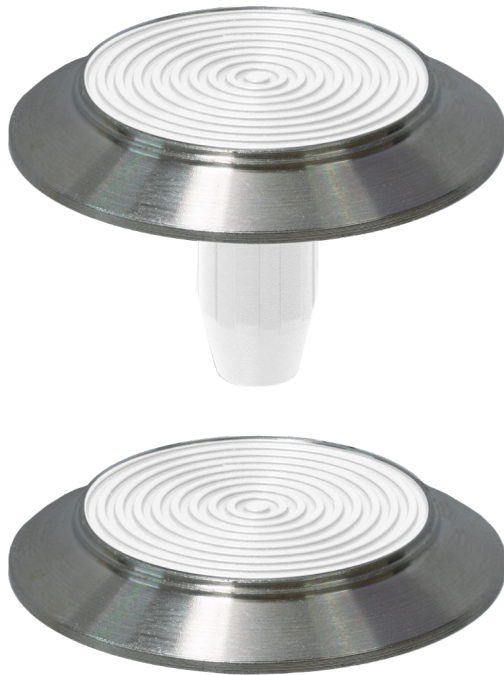


# WHITE TOP CLASSIC WARNING TACTILE

PRODUCT CODES:	DETAILS:
<b>DT0200W</b>	<b>SPIKED</b>
<b>DT0201W</b>	<b>FLAT</b>

<b>TYPE</b>	Tactile Ground Surface Indicator
<b>RANGE</b>	Warning Tactile
<b>DESIGN</b>	Classic
<b>MATERIAL</b>	316 marine grade stainless steel
<b>FINISH</b>	Machined / Moulded
<b>LOCATION</b>	Indoor or outdoor
<b>DIMENSIONS</b>	<b>OUTER DIA:</b> 35mm <b>TOP DIA:</b> 25mm <b>THICKNESS:</b> 5mm



## FEATURES

Moulded, concentric circle design on the horizontal face with a smooth machined outer edge

Complies with the NCC (D3.3 Parts of buildings to be accessible) where stated and Disability (Access to Premises—Buildings) Standards to meet the deemed-to-satisfy-provisions

Complies with slip resistance requirements as detailed in HB 198

Backed by a 2 year warranty

Registered design

## SLIP RESISTANCE TESTING

Important information: To determine a classification of a slip resistance rating, see Australian Standards Hand Book 198 (HB 198), a Guide to the specification and testing of slip resistance of pedestrian surfaces. This document outlines the minimum ratings of a location and situation of a pedestrian surface.

<b>TEST</b>	AS 4586 APPENDIX A: Wet Pendulum Test
<b>FOUR S 96 SLIDER</b>	= 86 <b>CLASS</b> = P5
<b>TRL 55 SLIDER</b>	= 77 <b>CLASS</b> = P5
<b>TEST</b>	AS 4586 APPENDIX C: Wet/Barefoot Ramp Test
<b>MEAN ANGLE OF INCLINATION</b>	= > 35° <b>CLASS</b> = C
<b>TEST</b>	AS 4586 APPENDIX D: Oil/Wet Ramp Test
<b>CORRECTED MEAN OVERALL ACCEPTANCE ANGLE</b>	= 28.9° <b>CLASS</b> = R12

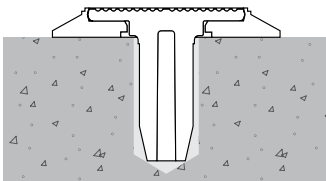
## LUMINANCE TESTING

Important information: To determine a luminance contrast between a substrate and the DTAC TGSI, see: AS/NZS 1428.4.1:2009. DTAC can test your substrate for luminance contrast to give you peace of mind that your DTAC project will be fully compliant to AS/NZS 1428.4.1 Appendix E.

<b>TEST</b>	AS/NZS 1428.4.1 APPENDIX E PARAGRAPH E3
<b>LUMINANCE REFLECTANCE RATING / WET</b>	= 87.0
<b>LUMINANCE REFLECTANCE RATING / DRY</b>	= 86.7

# WHITE TOP CLASSIC WARNING TACTILE INSTALLATION & APPLICATION

**SUBSTRATE** Stone / Masonry / Timber / Vinyl

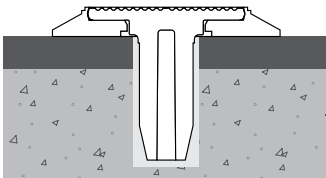


**CODE** DT0200W

**FIXING** Drill and pressure fit  
(M8 x 25mm hole)

**NOTE** Any thick substrate where  
maximum hold is required  
without chemical  
anchoring

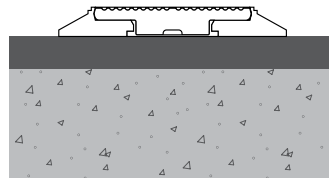
**SUBSTRATE** Vitrified Porcelain / Ceramics / Glass / Metals



**CODE** DT0200W

**FIXING** Diamond core/pressure fit  
(M8 x 25mm hole)

**NOTE** Any thick substrate where  
maximum hold is required  
without chemical  
anchoring



**CODE** DT0201W

**FIXING** Direct stick

**NOTE** Any thick or thin non  
drillable substrate