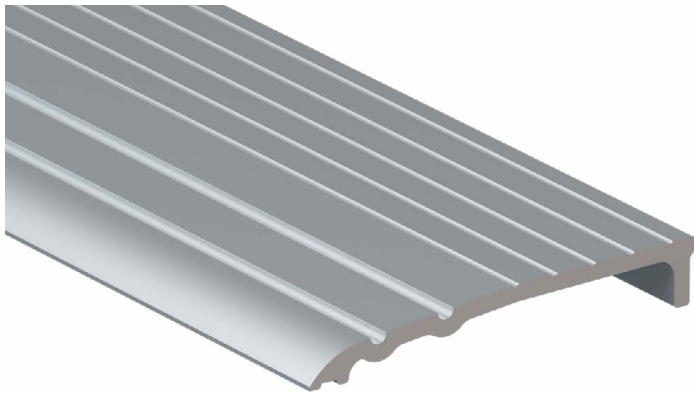


# PEMKO® THRESHOLD RAMP 50X8 NATURAL ANODISED ALUMINIUM

<b>TYPE</b>	Threshold Ramp
<b>RANGE</b>	Pemko® Thresholds & Transition Strips
<b>LOCATION</b>	Door sill
<b>MATERIAL</b>	6060 T5 extruded aluminium alloy
<b>FINISH</b>	Anodised



## FEATURES

A medium duty threshold plate which can be positioned back to back to form a two way threshold ramp conforming to NCC Pt. D2.15 Thresholds (b).

Can be used in conjunction with door bottom seals to prevent rain, draughts, noise and smoke infiltration.

Can also be used to provide a ramped frame for internal door mats and tiles.

Suitable for door sill applications

Backed by 2 year warranty

## APPROVALS

**UL:** R37913

## ACCESS & MOBILITY

**AUS:** NCC D2.15 & D3.3. AS1428.1

**NZ:** NZ BC Compliance Doc. D1/AS1 1.3.2

**UK/EU:** Approved Document M

## FIRE

**AUS/NZ:** NCC Spec. C3.4. AS1530.4 & AS/NZS 1905.1.  
NZ BC Compliance Doc. C/AS1 6.19.2(a) & App. C6.1.1.

**UK/EU:** Approved Document B. BS 476 Pt. 20 & 22  
(similar to BS EN 1634-1).

FRL & FRR-/240/30

BAL – FZ when used with a BAL rated door bottom seal  
in accordance with AS3959.

DTAC PTY LTD  
ABN 41 093 070 127

PEMKO®

Unit 4, 11-12 Phillip Court  
Port Melbourne Victoria  
Australia 3207

T 1300 793 478  
F 1300 780 628

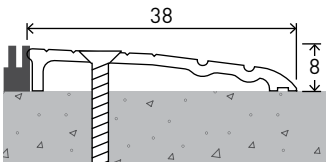
PO Box 5059  
South Melbourne Victoria  
Australia 3205

estimating@dtac.com.au  
www.dtac.com.au

© DTAC Pty Ltd 2021

# PEMKO® THRESHOLD RAMP 50X8 INSTALLATION & APPLICATION

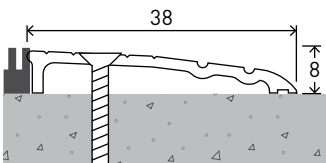
**LOCATION** Door sill



**CODE** DP1121

**SIZE** W50 x H8 - L1000

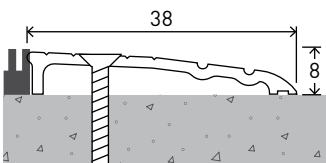
**FIXING** Screw-fixed (screws supplied)



**CODE** DP1122

**SIZE** W50 x H8 - L2000

**FIXING** Screw-fixed (screws supplied)



**CODE** DP1123

**SIZE** W50 x H8 - L3000

**FIXING** Screw-fixed (screws supplied)