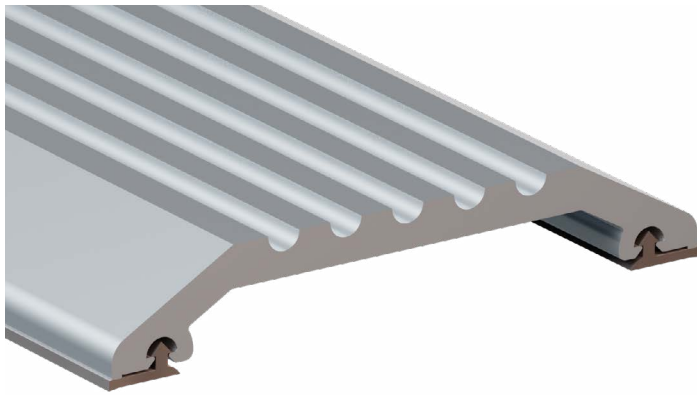


PEMKO® THRESHOLD PLATE 76X13 NATURAL ANODISED ALUMINIUM

TYPE	Threshold Plate
RANGE	Pemko® Thresholds & Transition Strips
LOCATION	Door sill
MATERIAL	6061 T5 extruded aluminium alloy
FINISH	Anodised



FEATURES

A wide, heavy duty threshold plate with a ribbed profile and integral sill gaskets. They are ideal for use with pivot hinge doors.

Can be used in conjunction with door bottom seals to prevent rain, draughts, noise and smoke infiltration.

Suitable for door sill applications

Backed by 2 year warranty

APPROVALS

UL: R37913

ACCESS & MOBILITY

NZ: NZ BC Compliance Doc. D1/AS1 1.3.2

UK/EU: Approved Document M

FIRE

AUS/NZ: NCC Spec. C3.4. AS1530.4 & AS/NZS 1905.1.
NZ BC Compliance Doc. C/AS1 6.19.2(a) & App. C6.1.1.

UK/EU: Approved Document B. BS 476 Pt. 20 & 22
(similar to BS EN 1634-1).

FRL & FRR-/240/30 and FD120

BAL – FZ when used with a BAL rated door bottom seal
in accordance with AS3959.

DTAC PTY LTD
ABN 41 093 070 127

PEMKO®

Unit 4, 11-12 Phillip Court
Port Melbourne Victoria
Australia 3207

T 1300 793 478
F 1300 780 628

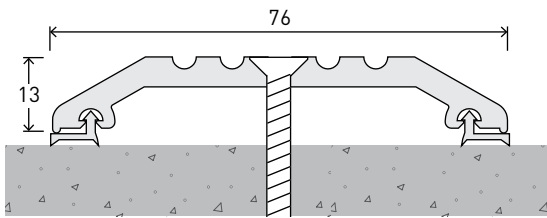
PO Box 5059
South Melbourne Victoria
Australia 3205

estimating@dtac.com.au
www.dtac.com.au

© DTAC Pty Ltd 2021

PEMKO® THRESHOLD PLATE 76X13 INSTALLATION & APPLICATION

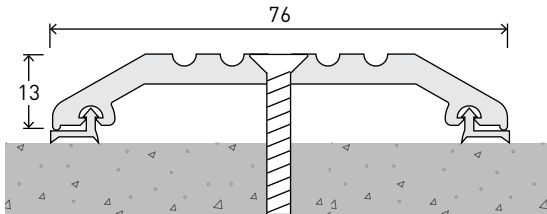
LOCATION Door sill



CODE DP0291

SIZE W76 x H13 - L1000

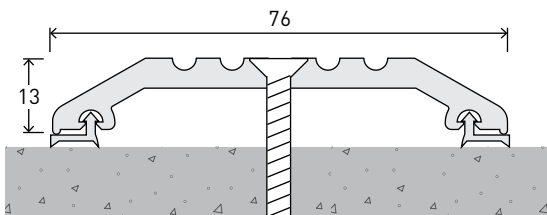
FIXING Screw-fixed (screws supplied)



CODE DP0292

SIZE W76 x H13 - L2000

FIXING Screw-fixed (screws supplied)



CODE DP0293

SIZE W76 x H13 - L3000

FIXING Screw-fixed (screws supplied)