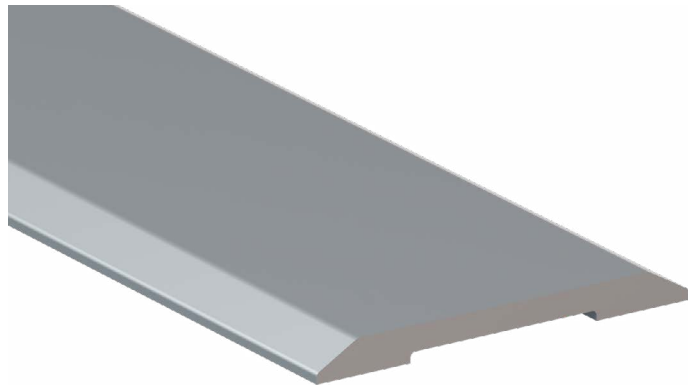


# PEMKO® THRESHOLD PLATE 40X3 NATURAL ANODISED ALUMINIUM

<b>TYPE</b>	Threshold Plate
<b>RANGE</b>	Pemko® Thresholds & Transition Strips
<b>LOCATION</b>	Door sill
<b>MATERIAL</b>	6060 T5 extruded aluminium alloy
<b>FINISH</b>	Anodised



## FEATURES

A low profile threshold plate that can be used in conjunction with door bottom seals to prevent rain, draught, noise and smoke infiltration.

Suitable for door sill applications

Backed by 2 year warranty

## APPROVALS

**UL:** R37913

## ACCESS & MOBILITY

**AUS:** NCC D2.15 & D3.3. AS1428.1

**NZ:** NZ BC Compliance Doc. D1/AS1 1.3.2

**UK/EU:** Approved Document M

## FIRE

**AUS/NZ:** NCC Spec. C3.4. AS1530.4 & AS/NZS 1905.1.  
NZ BC Compliance Doc. C/AS1 6.19.2(a) & App. C6.1.1.

**UK/EU:** Approved Document B. BS 476 Pt. 20 & 22  
(similar to BS EN 1634-1).

FRL & FRR-/240/30 and FD240

BAL – FZ when used with a BAL rated door bottom seal  
in accordance with AS3959.

DTAC PTY LTD  
ABN 41 093 070 127

PEMKO®

Unit 4, 11-12 Phillip Court  
Port Melbourne Victoria  
Australia 3207

T 1300 793 478  
F 1300 780 628

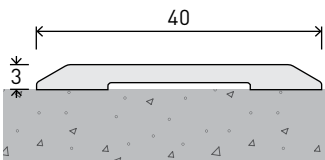
PO Box 5059  
South Melbourne Victoria  
Australia 3205

estimating@dtac.com.au  
www.dtac.com.au

© DTAC Pty Ltd 2021

# PEMKO® THRESHOLD PLATE 40X3 INSTALLATION & APPLICATION

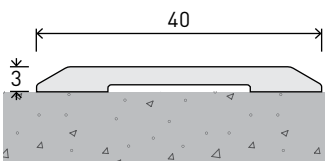
**LOCATION** Door sill



**CODE** DP0961

**SIZE** W40 x H3 - L1000

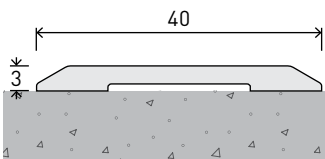
**FIXING** Screw-fixed or adhesive  
(screws supplied)



**CODE** DP0962

**SIZE** W40 x H3 - L2000

**FIXING** Screw-fixed or adhesive  
(screws supplied)



**CODE** DP0963

**SIZE** W40 x H3 - L3000

**FIXING** Screw-fixed or adhesive  
(screws supplied)