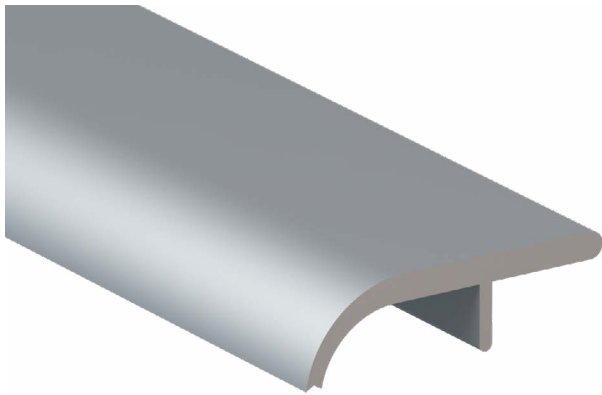


PEMKO® CARPET EDGE PLATE 38X11 NATURAL ANODISED ALUMINIUM

TYPE	Carpet Edge Plate
RANGE	Pemko® Thresholds & Transition Strips
LOCATION	Door sill
MATERIAL	6063 T5 extruded aluminium alloy
FINISH	Anodised



FEATURES

A heavy duty threshold plate designed for sill and carpet edge protection.

Can be used in conjunction with door bottom seals to prevent rain, draughts, noise and smoke infiltration.

Suitable for door sill applications

Backed by 2 year warranty

APPROVALS

ACCESS & MOBILITY

NZ: NZ BC Compliance Doc. D1/AS1 1.3.2

UK/EU: Approved Document M

FIRE

AUS/NZ: NCC Spec. C3.4. AS1530.4 & AS/NZS 1905.1.
NZ BC Compliance Doc. C/AS1 6.19.2[a] & App. C6.1.1.

UK/EU: Approved Document B. BS 476 Pt. 20 & 22
(similar to BS EN 1634-1).

FRL & FRR-/240/30

BAL – FZ when used with a BAL rated door bottom seal
in accordance with AS3959.

DTAC PTY LTD
ABN 41 093 070 127

Unit 4, 11-12 Phillip Court
Port Melbourne Victoria
Australia 3207

PO Box 5059
South Melbourne Victoria
Australia 3205

PEMKO®

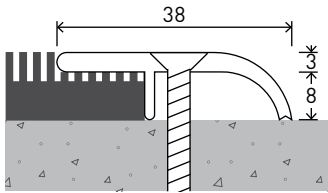
T 1300 793 478
F 1300 780 628

estimating@dtac.com.au
www.dtac.com.au

© DTAC Pty Ltd 2021

PEMKO® CARPET EDGE PLATE 38X11 INSTALLATION & APPLICATION

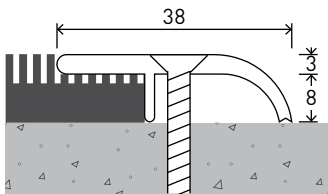
LOCATION Door sill



CODE DP0271

SIZE W38 x H11 - L1000

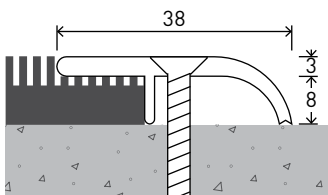
FIXING Screw-fixed (screws supplied)



CODE DP0272

SIZE W38 x H11 - L2000

FIXING Screw-fixed (screws supplied)



CODE DP0273

SIZE W38 x H11 - L3000

FIXING Screw-fixed (screws supplied)