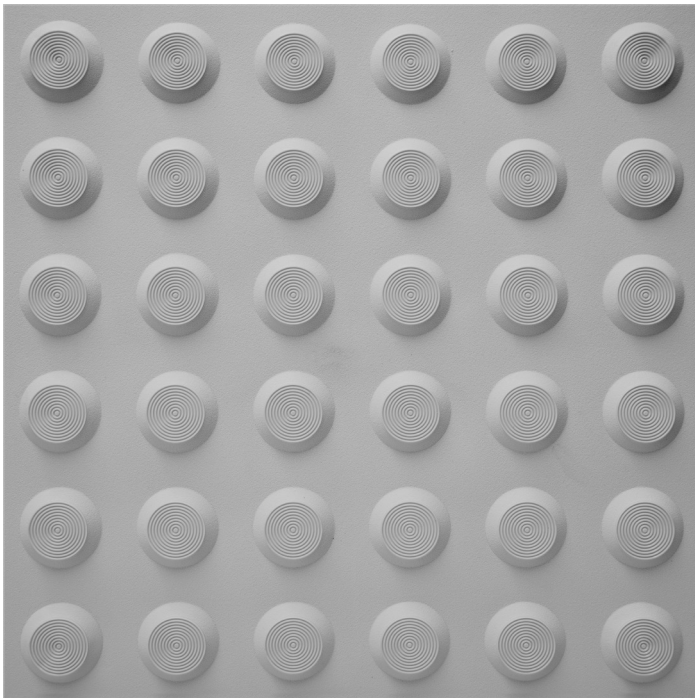


# ULTIMAT® TACTILE CLASSIC LIGHT GREY URETHANE



<b>TYPE</b>	Tactile Ground Surface Indicator
<b>RANGE</b>	Integrated Tactile
<b>DESIGN</b>	Classic
<b>MATERIAL</b>	UV stabilised thermo plastic urethane (TPU)
<b>FINISH</b>	Injection moulded
<b>DIMENSIONS</b>	H300 x W300



## FEATURES

- Injection moulded as a uniform integrated tactile
- Concentric circle design on the horizontal face with a smooth outer edge
- Complies with the NCC (D3.8 Tactile Indicators) and Disability (Access to Premises—Buildings) standards to meet the deemed-to-satisfy-provisions
- Complies with slip resistance requirements as detailed in HB 198
- Backed by 2 year warranty

## SLIP RESISTANCE TESTING

Important information: To determine a classification of a slip resistance rating, see Australian Standards Hand Book 198 (HB 198), a Guide to the specification and testing of slip resistance of pedestrian surfaces. This document outlines the minimum ratings of a location and situation of a pedestrian surface.

<b>TEST</b>	AS 4586 APPENDIX A: Wet Pendulum Test
<b>FOUR S 96 SLIDER</b>	= 68 <b>CLASS</b> = P5
<b>TRL 55 SLIDER</b>	= 73 <b>CLASS</b> = P5
<b>TEST</b>	AS 4586 APPENDIX C: Wet/Barefoot Ramp Test
<b>MEAN ANGLE OF INCLINATION</b>	= 23° <b>CLASS</b> = C
<b>TEST</b>	AS 4586 APPENDIX D: Oil/Wet Ramp Test
<b>CORRECTED MEAN OVERALL ACCEPTANCE ANGLE</b>	= 21° <b>CLASS</b> = R11

## LUMINANCE TESTING

Important information: To determine a luminance contrast between a substrate and the DTAC TGSI, see: AS/NZS 1428.4.1:2009. DTAC can test your substrate for luminance contrast to give you peace of mind that your DTAC project will be fully compliant to AS/NZS 1428.4.1 Appendix E.

<b>TEST</b>	AS/NZS 1428.4.1 APPENDIX E PARAGRAPH E3
<b>LUMINANCE REFLECTANCE RATING / WET</b>	= 42.56
<b>LUMINANCE REFLECTANCE RATING / DRY</b>	= 43.43

## FIRE TESTING

Important information: The results displayed in this document relate to the behaviour and environment of the product in the conditions to which the test was carried out. This is not intended to be the sole criterion for assessing the potential fire hazard of the product in use.

<b>TEST</b>	AS/ISO 9239.1: Reaction to Fire Tests for Floor Coverings
<b>MEAN DISTANCE OF FLAME TRAVEL</b>	= 430mm
<b>AVERAGE CRITICAL RADIANT FLUX</b>	= 5.0kW/m2
<b>AVERAGE INTEGRATED SMOKE VALUE</b>	= 244% x min

DTAC PTY LTD  
ABN 41 093 070 127

Unit 4, 11-12 Phillip Court  
Port Melbourne Victoria  
Australia 3207

PO Box 5059  
South Melbourne Victoria  
Australia 3205

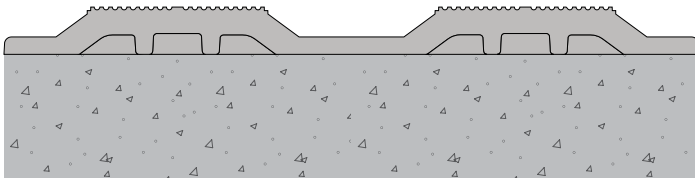
T 1300 793 478  
F 1300 780 628

estimating@dtac.com.au  
www.dtac.com.au

© DTAC Pty Ltd 2021

# ULTIMAT® TACTILE CLASSIC LIGHT GREY APPLICATION

**SUBSTRATE** Stone / Masonry / Timber / Vinyl

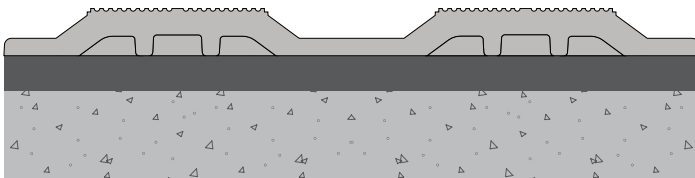


**CODE** DWU0012

**FIXING** Direct stick

**NOTE** Installed on top of or installed in an existing recess made to suit the multiples of the 300 x 300mm tile.

**SUBSTRATE** Vitrified Porcelain / Ceramics / Glass / Metals



**CODE** DWU0012

**FIXING** Direct stick

**NOTE** Installed on top of or installed in an existing recess made to suit the multiples of the 300 x 300mm tile.